

The Subsidised School Program

‘Kindness is the language that the deaf can hear and the blind can see’. Mark Twain

We designed the subsidised school programme to reach a wider audience of young people, through school partnerships. You can find detailed information below.

The school programme creates partnerships with schools that frequently bring groups of students to Dialogue Hub as part of their curriculum. It includes tours led by our visually impaired staff and tailored lessons taught in the unique darkened exhibition space and Sign Language. We believe this age group will champion change through initiatives born out of school groups, extending impact even further.

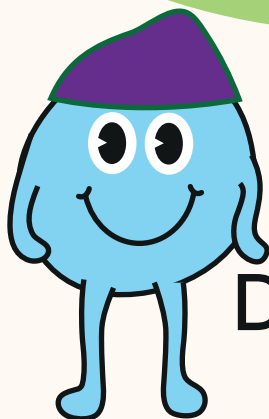


Students will be in the darkness for about thirty minutes with their blind/Partially sighted guide. Both before and after the exhibition, our team will engage students in **activities** and discussion to deepen their experience, answer any questions they have, and stimulate critical thinking about their senses and social inclusion.

Dialogue Experience: Using our darkened exhibition space, our visually impaired staff would deliver an exhibition with a focus on ‘building an inclusive community’.

Dialogue Cafe: Experience being customers and baristas at dialogue cafe, through guidance of our hearing-impaired staff, exposing participants to basic signing.

For more information and to book your educational tour, please contact us at info@museprojects.co



**Dialogue
Hub**



We are
unstoppable.
We are **UnLtd**